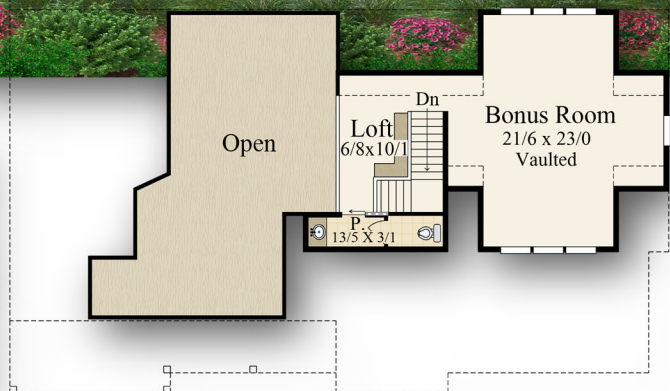


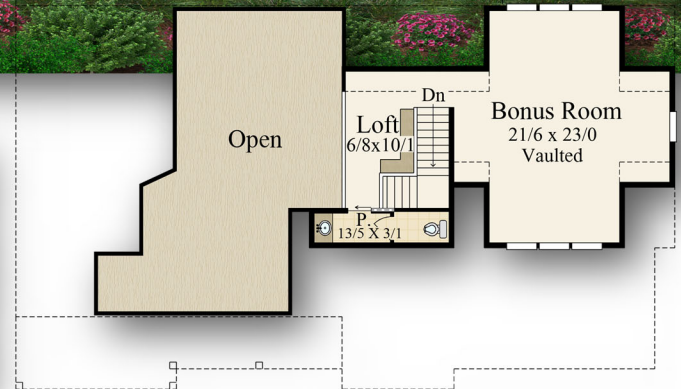
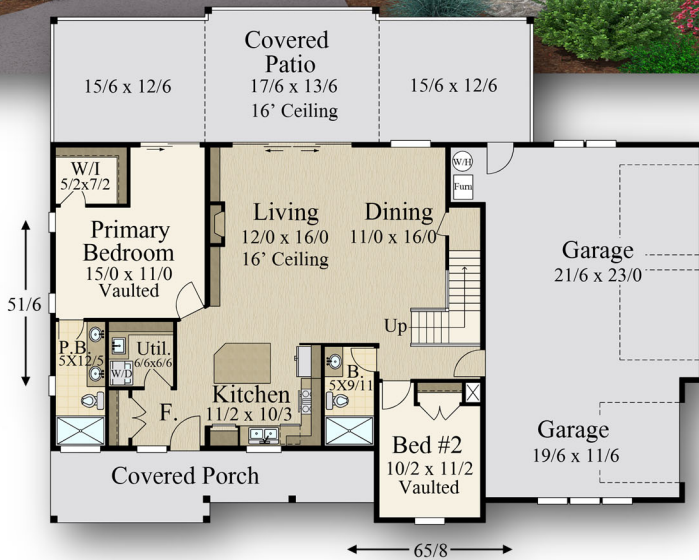
"Black Canyon" MF-2004



Main Floor - 1,402 Sq. Ft.
Upper Floor - 602 Sq. Ft.
Total - 2,004 Sq. Ft.

| | | |
|-----------------|------|--------|
| Main | 1402 | sq. ft |
| Lower | 602 | sq. ft |
| Total | 2004 | sq. ft |
| 65/8 W X 51/6 D | | |

"Black Canyon" MF-2004



Main Floor - 1,402 Sq. Ft.
 Upper Floor - 602 Sq. Ft.
 Total - 2,004 Sq. Ft.

| | | |
|-----------------|------|--------|
| Main | 1402 | sq. ft |
| Lower | 602 | sq. ft |
| Total | 2004 | sq. ft |
| 65/8 W X 51/6 D | | |