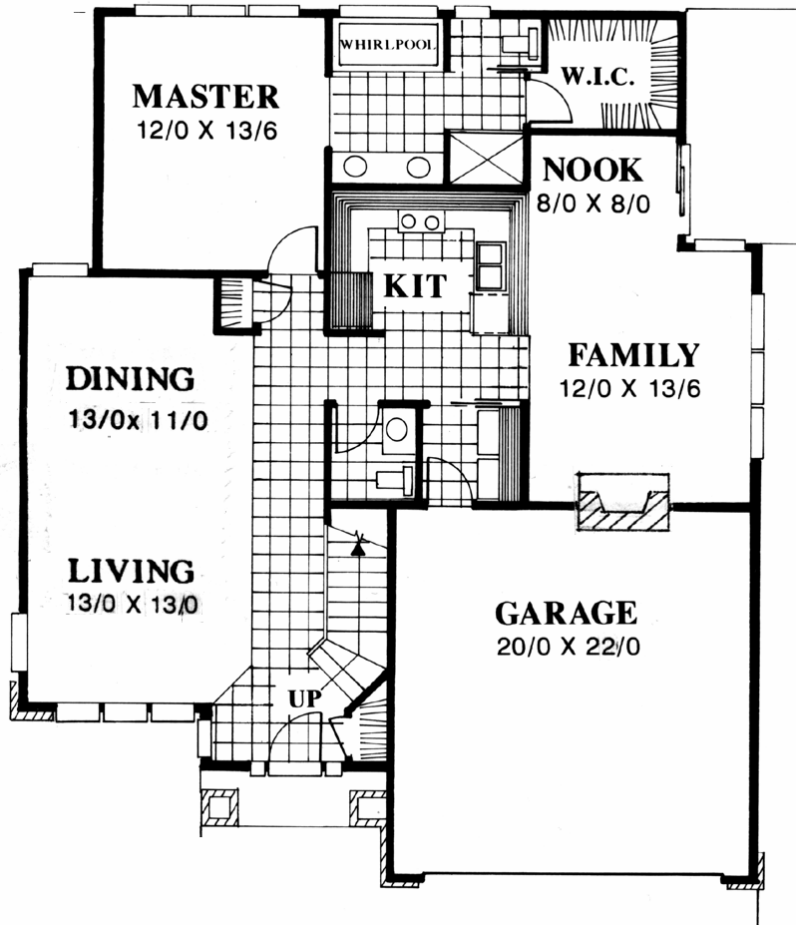
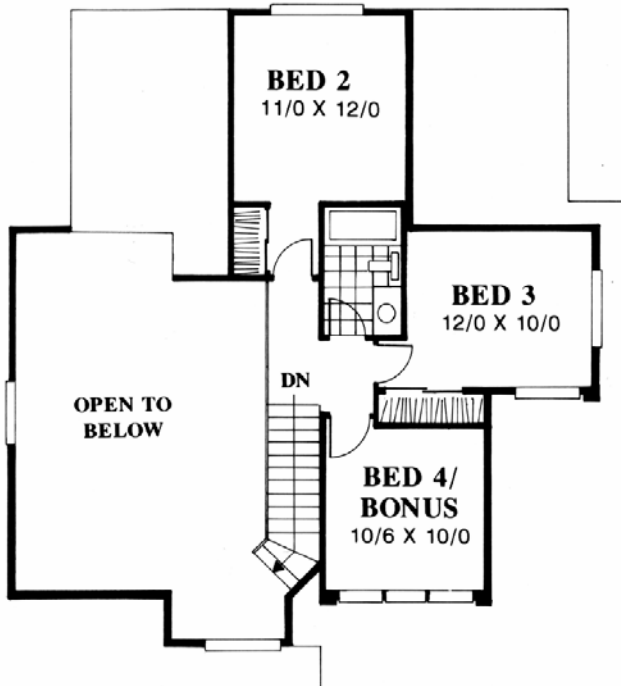


Plan
MSAP-1786



Plan
MSAP-1786
40/0 wide x 48/0 deep
1,786 sq. ft.

"This MSA Prairie version of our very popular M-1786 plan offers family living at its best. Perfect for a narrow lot this plan sports a main floor master bedroom, vaulted living, dining and foyer. The three upper floor bedrooms complete this picture of elegance and sophistication."